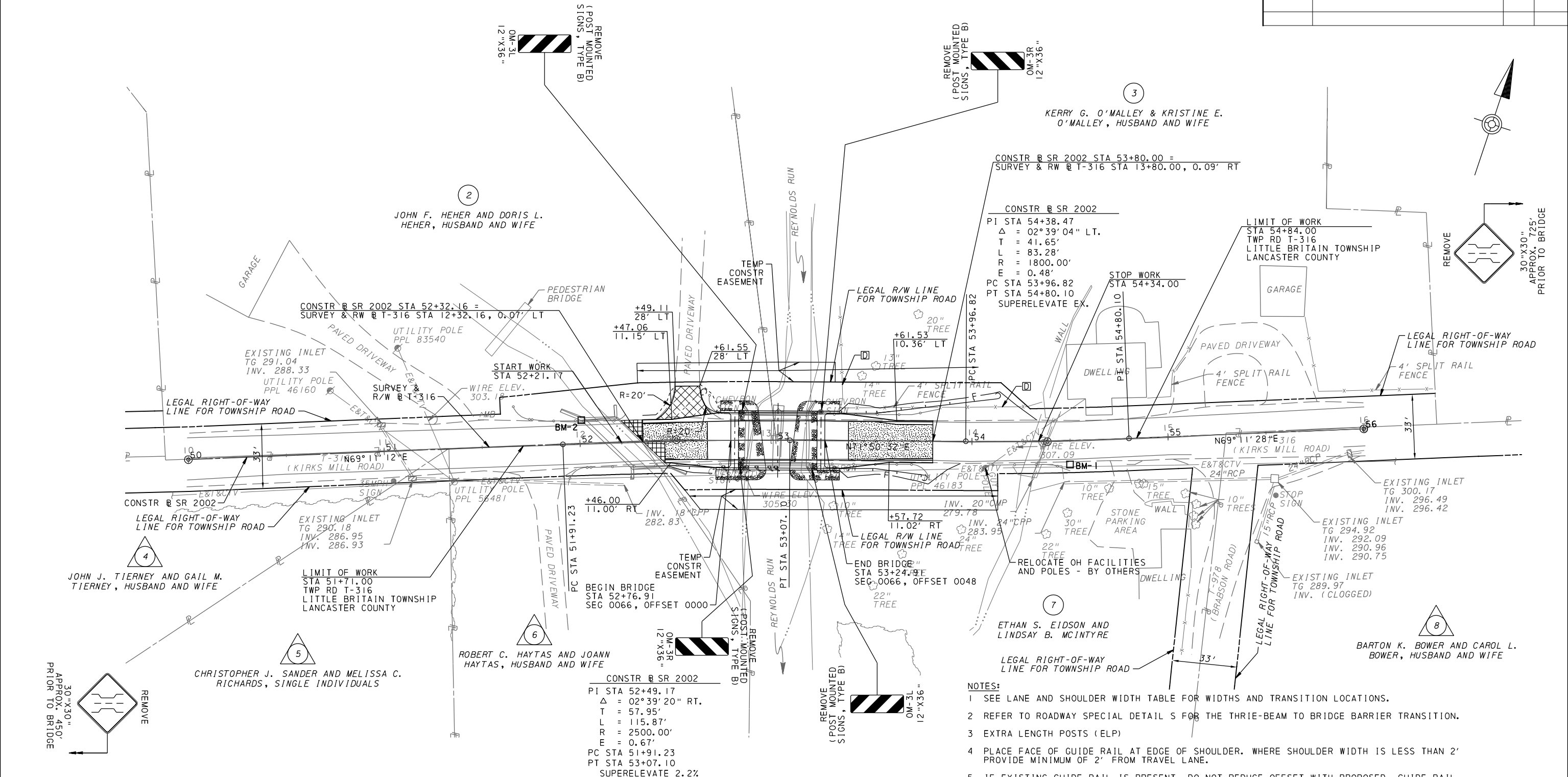


DISTRICT	COUNTY	ROUTE	SECTION	SHEET
8-0	LANCASTER	2002	000	3 OF 15
LITTLE BRITAIN TOWNSHIP				
REVISION NUMBER	REVISIONS	DATE	BY	



USER: KSCOMAK  
 PATH: PLOT\_DRIVER\_PlanDOT\_PDF\_Mono.plt.ctb  
 FILE: 17-RBRP-JV273-RD-PLN-01  
 MODEL: dwg.txd  
 PLOT DATE: 07-12-2016 4:21:30 PM

GUIDE RAIL LAYOUT DATA				
NEAR APPROACH	TERMINAL TREATMENT	GUIDE RAIL	BARRIER TRANSITION	REMARKS
RT	ATTACH TO EXISTING GUIDE RAIL, 12.4' RT	N/A	THRIE-BEAM TO VERTICAL WALL BRIDGE BARRIER	12.5 LF THRIE-BEAM 6.25 LF TRANSITION SECTION APPROX. 16:1 FLARE RATE
LT	TERMINAL SECTION, SINGLE, 24.3' LT STA 52+62	N/A	THRIE-BEAM TO VERTICAL WALL BRIDGE BARRIER MODIFIED	12.5 LF NESTED THRIE-BEAM WITH 3.125 LF TRANSITION SECTION AROUND DRIVEWAY @ 10' RADIUS
RT	TERMINAL SECTION, SINGLE, 17.3' RT STA 53+76	12.5 LF TYPE 2-S ELP	THRIE-BEAM TO VERTICAL WALL BRIDGE BARRIER	8:1 FLARE RATE
LT	TERMINAL SECTION, SINGLE, 21.7' LT STA 54+14	50 LF TYPE 2-S ELP	THRIE-BEAM TO VERTICAL WALL BRIDGE BARRIER	8:1 FLARE RATE

- LEGEND**
- MILL AND OVERLAY/FULL DEPTH TO LIMIT OF EXISTING
  - BOX CULVERT - SEE TYPICAL SECTION NOTE 2
  - MILL AND OVERLAY
  - BITUMINOUS DRIVEWAY ADJUSTMENT
  - SCOUR PROTECTION
  - PARCEL IDENTIFICATION NUMBER
  - PARCEL IDENTIFICATION NUMBER - NO TAKE

- NOTES:**
- SEE LANE AND SHOULDER WIDTH TABLE FOR WIDTHS AND TRANSITION LOCATIONS.
  - REFER TO ROADWAY SPECIAL DETAILS FOR THE THRIE-BEAM TO BRIDGE BARRIER TRANSITION.
  - EXTRA LENGTH POSTS (ELP)
  - PLACE FACE OF GUIDE RAIL AT EDGE OF SHOULDER. WHERE SHOULDER WIDTH IS LESS THAN 2' PROVIDE MINIMUM OF 2" FROM TRAVEL LANE.
  - IF EXISTING GUIDE RAIL IS PRESENT, DO NOT REDUCE OFFSET WITH PROPOSED. GUIDE RAIL OFFSET MUST MEET MINIMUM REQUIREMENTS PROVIDED IN NOTE 4.
  - FLARE TERMINAL SECTION, SINGLE MIN. 4' FROM BACK EDGE OF SHOULDER (6' FROM EDGE OF LANE IF SHOULDER < 2' WIDE) AND OUTSIDE OF CLEARZONE IN ACCORDANCE WITH GUIDE RAIL TAPER RATE TABLE AS SHOWN ON SPECIAL DETAIL 0 OR 0-1.
  - REMOVE EXISTING GUIDE RAIL IN CONFLICT WITH PROPOSED.
  - THE THRIE-BEAM TRANSITION SHALL BE PARALLEL OR CONCENTRIC TO THE BASELINE.
  - PROVIDE RUBBING RAIL WHEN HEIGHT OF GUIDE RAIL IS OVER 28" IN TRANSITION AREAS TO STRUCTURE MOUNTED GUIDE RAIL ON CULVERTS OR TRANSITIONS TO EXISTING GUIDE RAIL.
  - TRANSITION HEIGHT OF GUIDE RAIL FROM STRUCTURE MOUNTED GUIDE RAIL OR TO EXISTING GUIDE RAIL AT A RATE 1" PER 25'.
  - REPLACE SIGN PANEL AND POSTS IF DAMAGED OR REMOVED DUE TO CONSTRUCTION ACTIVITIES. REPLACE SIGN AT SAME LOCATION UNLESS SHOWN OTHERWISE.
  - ALL EXISTING FENCE THAT CONFLICTS WITH CONSTRUCTION ACTIVITIES SHALL BE REMOVED AND STOCKPILED FOR THE OWNER.